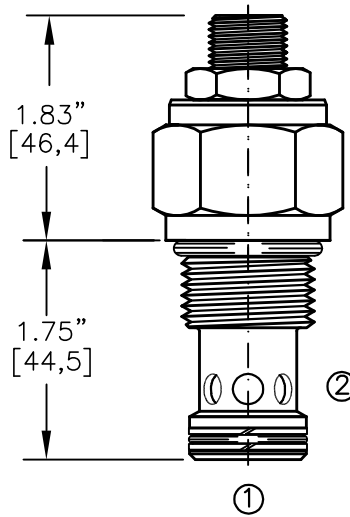
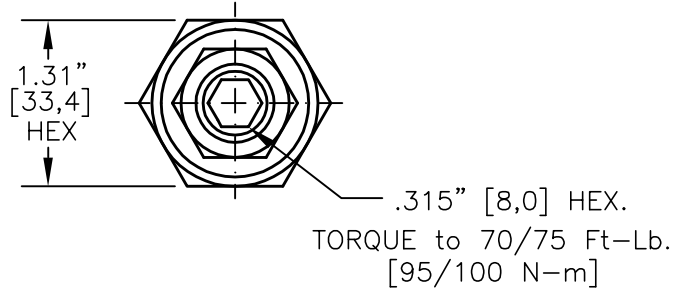
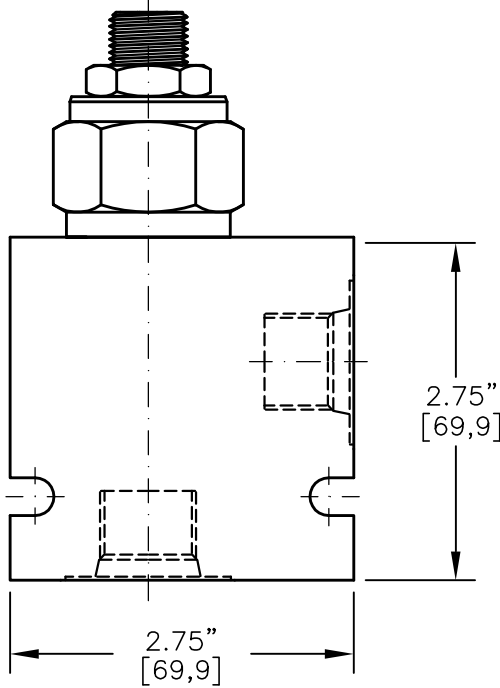
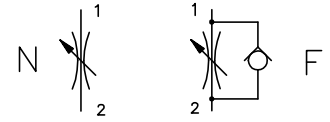
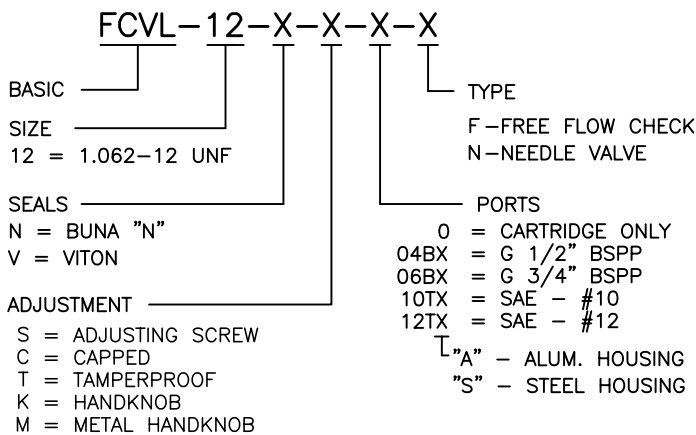




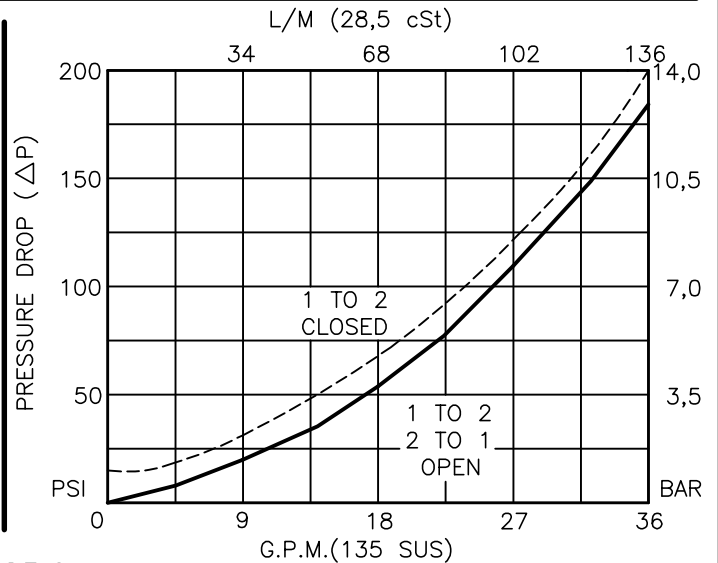
# FLOW CONTROL VALVE WITH OR WITHOUT FREE REVERSE FLOW CHECK



FOR ALUMINUM OR STEEL VALVE HOUSING CONFIGURATIONS SEE PAGE 0-013.1



FOR ADJUSTMENT CONTROL OPTIONS SEE PAGE 0-050.0





## FLOW CONTROL VALVE WITH OR WITHOUT FREE REVERSE FLOW CHECK

### DESCRIPTION

This unit is a SCREW IN, cartridge type, adjustable, poppet type, hydraulic flow control valve with or without free reverse flow check.

### OPERATIONS

This valve increases its orifice value from fully closed to fully open with counter-clockwise rotation.

### FEATURES AND BENEFITS

Desired settings can be locked down.  
Valve adjustment is difficult while subjected to high pressure.  
Valve is available with a screw, tamperproof, capped or knob adjustment.  
All external carbon steel parts are plated for longer life against the elements.  
All cartridge valves are 100% functionally tested.  
Industry common cavity.

### SPECIFICATIONS

OPERATING PRESSURE: 5,000 PSI [350 Bar]  
PROOF PRESSURE: 10,000 PSI [700 Bar]  
FLOW: 36.0 GPM [136 l/m] nominal. See performance chart.  
INTERNAL LEAKAGE: 5 drops per minute maximum @ 5,000 PSI (350 Bar)  
VALVE HOUSINGS: 2500 PSI [175 Bar] = Aluminum - Anodized.  
5000 PSI [350 Bar] = Steel - Unplated.  
OPERATING TEMPERATURE: -40° to +250° F. [-40° to +120° C.]  
OPERATING MEDIA: All general purpose hydraulic fluids such as  
MIL-H-5606, SAE-#10, SAE-#20, etc.  
INSTALLATION: No restrictions.  
SEAL KIT: SKN-1222 Buna "N".  
SKV-1222 Viton.  
WEIGHT: .63 lb [.25 kg] cartridge only.  
VALVE CAVITY: #C1220, See Page 0-013.0.